

TM 55-1740-201-23P

DEPARTMENT OF THE ARMY TECHNICAL MANUAL

**ORGANIZATIONAL AND DS REPAIR
PARTS AND SPECIAL TOOLS LIST**

TRANSPORTER, AIRMOBILE

FSN 1740-901-1870

1740-902-3132

**HEADQUARTERS, DEPARTMENT OF THE ARMY
MARCH 1971**

CHANGE }
 No. 1 }

HEADQUARTERS
 DEPARTMENT OF THE ARMY
 WASHINGTON, D. C., 3 July 1989

ORGANIZATIONAL AND DS REPAIR
 PARTS AND SPECIAL TOOLS LIST

TRANSPORTER, AIRMOBILE

FSN 1740-901-1870
 1740-902-3132

TM 55-1740-201-23P, 23 March 1971 is changed as follows:

Page vi, para 6, lines 8 and 9 are changed as follows: Systems Command, ATTN: AMSAV-MMD, 4300 Goodfellow Blvd, St. Louis, Missouri 63120-1798.

Page 5, Figure 3. Add callout numbers 35 and 36, as illustrated on the new Figure 3 in back of change.

Page 9, after 8th line item, FASTENER ASSEMBLY. Add the following:

X2-0--	B2740-103-10	(92867)	BRAKE	CABLE	ASSY	R	EA	1	3	35
X2-0--	B2740-103-11	(92867)	BRAKE	CABLE	ASSY L		EA	1	3	36

By Order of the Secretary of the Army:

CARL E. VUONO
General, United States Army
Chief of Staff

Official:

WILLIAM J. MEEHAN II
Brigadier General, United States Army
The Adjutant General

DISTRIBUTION:

To be distributed in accordance with DA Form 12-31, AVUM and AVIM Maintenance requirements for All Fixed and Rotary Wing Aircraft.

TECHNICAL MANUAL }
 TM 55-1740-201-23P }

HEADQUARTERS
 DEPARTMENT OF THE ARMY
 Washington, D. C., 23 March 1971

TRANSPORTER, AIRMOBILE

FSN 1740-901-1870
 1740-902-3132

Current as of 1 February 1971

Table of Contents

Section	Listing Page	Illus Figure
I Introduction	iii	
II Prescribed Load Allowances (PLA) (not applicable) Transporter Airmobile	4	1
III Repair Parts for Organizational and Direct Support Maintenance Group		
1.1 Axle assembly, front	4	2
Axle assembly, rear.....	6	3
1.2 Adapter assembly	9	4
1.4 Wheels and tires	9	5
1.6 Bearings	11	5
1.7 Suspension assembly, front...	11	6
Suspension assembly, rear...	14	7
2.0 Hydraulic system	14	
2.1 Cylinder assembly	14	8
2.3 Pump	15	3
2.5 Towbar assembly	15	9
IV Special Tools, Test and Support Equipment (Not applicable)		
V Federal Stock Number and Reference Number Index	16	

SECTION I INTRODUCTION

1. Scope

This manual lists the repair parts and special tools required for the performance of organizational and direct support maintenance of Transporter, Airmobile FSN 1740-901-1870 and 1740-902-3132.

2. General

This Repair Parts and Special Tools List is divided into the following sections:

a. Prescribed Load Allowance (PLA) Section II. Not applicable.

b. Repair Parts - Section III. A list of repair parts authorized for the performance of maintenance at the organizational and DS level.

c. Special Tools, Test and Support Equipment - Section IV. Not applicable.

d. Federal Stock Number and Reference Number Index - Section V. This section is divided as follows:

- (1) A list of federal stock numbers in ascending numerical sequence cross-referenced to the illustration figure and item number.
- (2) A list of reference numbers in ascending alphanumerical sequence cross-referenced to the manufacturers federal supply code, illustration figure and item number.

3. Explanation of Columns

The following provides an explanation of columns in the tabular list in section III.

a. Source, Maintenance, and Recoverability Codes (SMR).

- (1) Source code, indicates the selection status and source for the listed item. Source codes used are:

<i>Code</i>	<i>Explanation</i>
P	Repair Parts, Special Tools and Test Equipment supplied from the GSA/DSA, or Army supply system, and authorized for use at indicated maintenance categories.

<i>Code</i>	<i>Explanation</i>
P	Repair Parts, Special Tools and Test Equipment which are procured and stocked for insurance purposes because, the combat or military essentiality of the end item dictates that a minimum quantity be available in the supply system.
P9	Assigned to items which are NSA design controlled: unique repair parts, special tools, test, measuring and diagnostic equipment, which are stocked and supplied by the Army COMSEC Logistic System and which are not subject to the provisions of AR 380-41.
P10	Assigned to items which are NSA design controlled: special tools, test, measuring and diagnostic equipment for COMSEC support, which are accountable under the provisions of AR 380-41, and which are stocked and supplied by the Army COMSEC Logistic System.
M	Repair Parts, Special Tools and Test Equipment which are not procured or stocked, as such, in the supply system but are to be manufactured at indicated maintenance levels.
A	Assemblies which are not procured or stock as such, but are made up of two or more units. Such component units carry individual stock numbers and descriptions, are procured and stocked separately and can be assembled to form the required assembly at indicated maintenance categories.
X	Parts and assemblies that are not procured or stocked because the failure rate is normally below that of the applicable end item of component. The failure of such part or assembly should result in retirement of the end item from the supply system.
X1	Repair parts which are not procured or stocked. The requirement for such items will be filled by the next higher assembly or component.
X2	Repair Parts, Special Tools, and Test Equipment which are not stocked and have no foreseen mortality. The in-

total quantity of items authorized for the number of equipments supported. Subsequent appearances of the same item will have the letters "REF" in the allowance columns. Items authorized for use as required, but not for initial stockage are identified with an asterisk (*) in the allowance column.

- (2) The quantitative allowances for organizational level of maintenance represents one initial prescribed load for a 15-day period for the number of equipments supported. Units and organizations authorized additional prescribed loads, will multiply the number of prescribed loads authorized by the quantity of repair parts reflected in the appropriate density column to obtain the total quantity of repair parts required.
- (3) Organizational units providing maintenance for more than 100 of these equipments shall determine the total quantity of repair parts required by converting the equipment quantity to a decimal factor by placing a decimal point before the next to last digit of the number to indicate hundredths, and multiplying the decimal factor by the parts quantity authorized in the 51-100 allowance column. Example, authorized allowance for 51-100 equipments is 12; for 140 equipments multiply 12 by 1.40 or 16.80 rounded off to 17 parts required.
- (4) Subsequent changes to allowances will be limited as follows. No changes in the range of items is authorized. If additional items are considered necessary, recommendations should be forwarded to the Commanding General, U. S. Army Aviation Systems Command (USAAVSCOM), P. O. Box 209, St. Louis, MO 63166, for exception or revision to the allowance list. Revisions to the range of items authorized will be made by USAAVSCOM based upon engineering experience, demand data, or The Army Equipment Records System (TAERS) infor-

mation.

g. Thirty-Day DS Maintenance Allowances.

- (1) The allowance column is divided into three subcolumns. Indicated in each subcolumn, opposite the first appearance of each item, is the total quantity of items authorized for the number of equipments supported. Subsequent appearances of the same item will have the letters "REF" in the applicable allowance columns. Items authorized for use as required, but not for initial stockage are identified with an asterisk (*) in the allowance column.
- (2) The quantitative allowances for DS levels of maintenance will represent initial stockage for a 30-day period for the number of equipments supported. The basis of issue for authorized special tools, test and support equipment is the number of end items of equipment supported.
- (3) Determination of the total quantity of parts required for maintenance of more than 100 of these equipments can be accomplished by converting the equipment quantity to a decimal factor by placing a decimal point before the next to last digit of the number to indicate hundredths, and multiplying the decimal factor by the parts quantity authorized in the 51-100 allowance column. Example, authorized allowance for 51-100 equipments is 40; for 150 equipments multiply 40 by 1.50 or 60 parts required.

h. One-Year Allowances Per 100 Equipments/Contingency Planning Purposes.

When applicable, this column indicates opposite the first appearance of each item the total quantity required for distribution and contingency planning purposes. The range of items indicates total quantities of all authorized items required to provide adequate support of 100 equipments for 1-year.

i. Illustration. This column is divided as follows:

- (1) *Figure Number.* Indicates the figure number of the illustration

in which the item is shown.

- (2) **Item Number.** Indicates the call-out number to reference the item in the illustration.

4. How to Locate Repair Parts

a. When Federal Stock Number or Reference Number is Unknown:

- (1) **First.** Find the illustration of the assembly or subassembly to which the repair part belongs.
- (2) **Second.** Identify the repair part on the illustration and note the illustration figure and item number of repair part.
- (3) **Third.** Using the Repair Parts Listing, find the figure and item number listed in the illustration column.

b. When Federal Stock Number or Reference Number is Known:

- (1) **First.** Using the Index of Federal Stock Numbers and Reference Numbers, find the pertinent federal stock number or reference number. This index is in ascending federal stock number sequence followed by a list of reference numbers in alphanumeric sequence, cross-referenced to the illustration figure and item number.
- (2) **Second.** Using the Repair Parts Listing, find the figure and item number listed in the illustration column referenced in the Index of Federal Stock Numbers and Reference Numbers.

5. Federal Supply Codes for Manufacturers

<i>Code</i>	<i>Manufacturer</i>
07505	Blackhawk Mfg Co Division of Applied Power Industries Inc PO Box 2870 1133 1133 W National Ave Milwaukee WI 53227
16128	Gichner Mobile Systems 6701 Ammendale Rd Beltsville MD 20705
24835	Gichner Fred S Iron Works 6601 Ammendale Rd Beltsville MD 20705
26678	Gichner Mobile Systems Inc Independence and Mercer Sts Berkeley Springs WV 25411
33116	Kelsey-Hayes Co 6100 Mc Graw Detroit MI 48232
45681	Parker-Hannifin Corp 17325 Euclid Ave Cleveland OH 44112
60038	Timken Roller Bearing Co 1835 Dueber Ave SW Canton OH

<i>Code</i>	<i>Manufacturer</i>
80205	National Aerospace Standards Committee Aerospace Industries Association of America 1725 De Sales NW Washington DC 20036
88044	Aeronautical Standards Group Dept of Navy and Air Force
93072	Toledo Stamping and Mfg Co 99 Fearing Blvd P O Box 516 Toledo OH 43601
95406	Everhot Products Co 2001-9 Carrol Ave Chicago IL 60612
95760	Protective Closure Co Inc 2150 2150 Elmwood Ave Buffalo NY 14207
96906	Military Standards Promulgated by Standardization Div Directorate of Logistic Services DSA

6. Recommendations for Maintenance

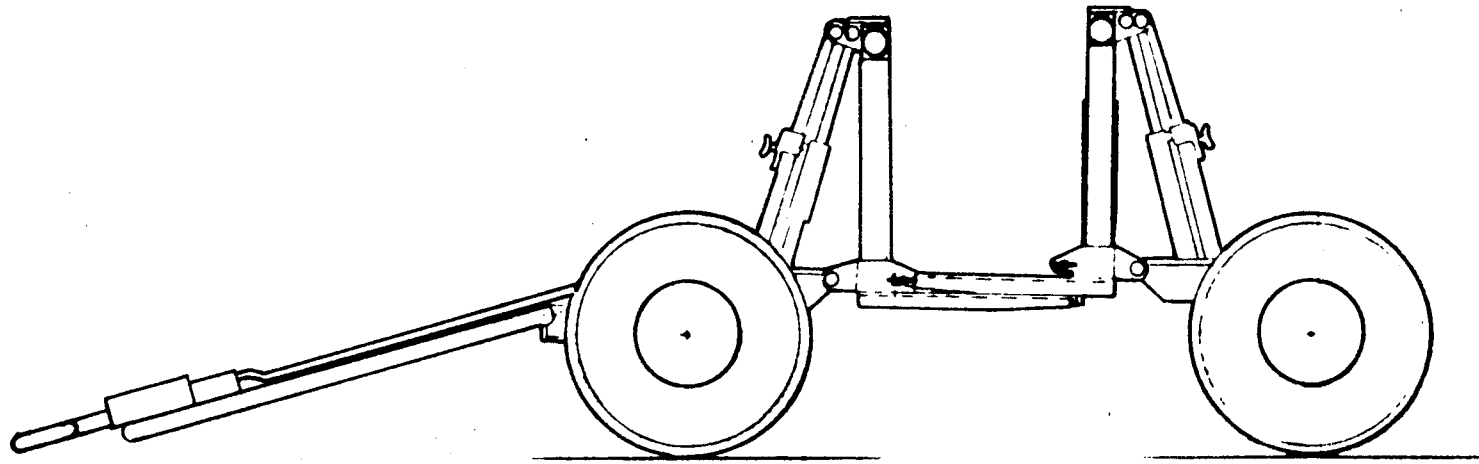
Publication Improvements

Report of errors, omissions, and recommendations for improving this publication by the individual user is encouraged. Reports should be submitted on DA Form 2028 (Recommended Changes to DA Publications) and forwarded direct to the Commanding General U. S. Army Aviation Systems Command, ~~ATTN: AMSAV-I-MLRA, P. O. Box 209, St. Louis, MO 63166.~~

*ATTN: AMSAV-MMD, 4300
Bordjellow Blvd, St. Louis, Missouri
63120-1798*

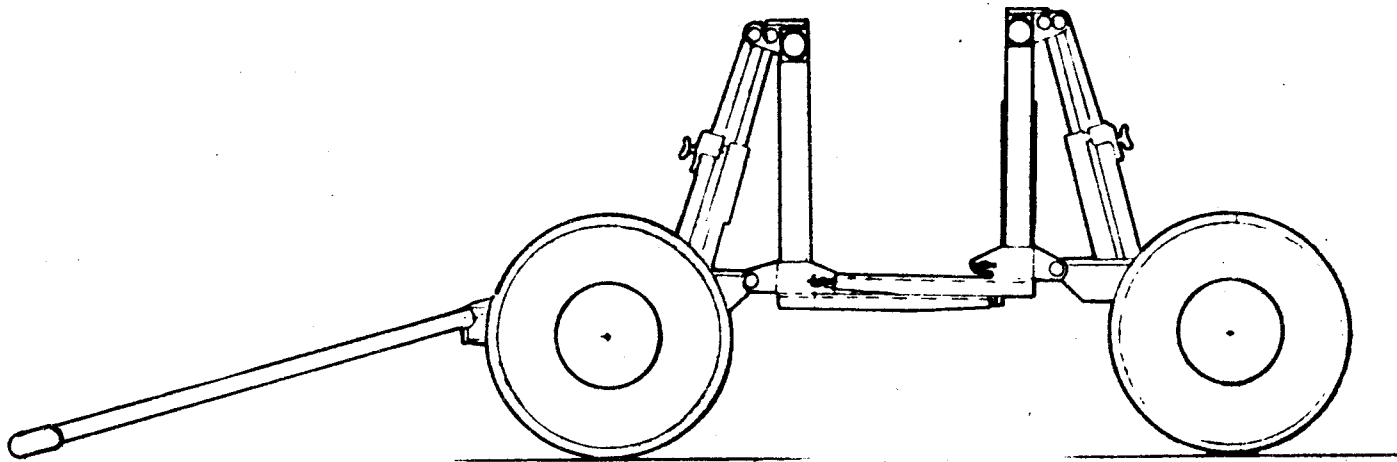
(per ch 1)

TM55-1740-201-23P



P/N 7400050-501

model B



P/N 7400017-502

model A

FIGURE 1. TRANSPORTER, AIRMOBILE

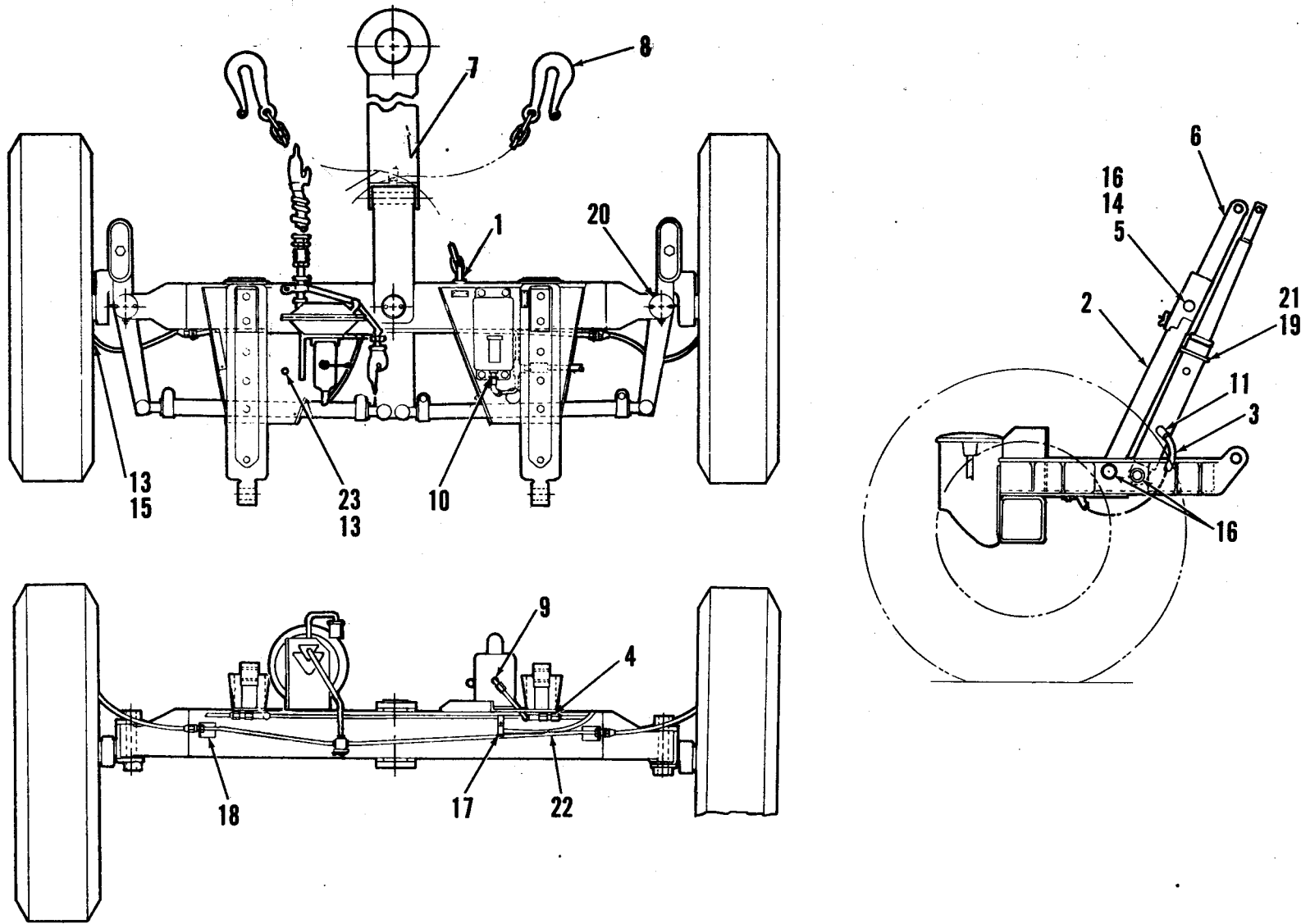


FIGURE 2. FRONT AXLE ASSEMBLY (SHEET 1 OF 2)

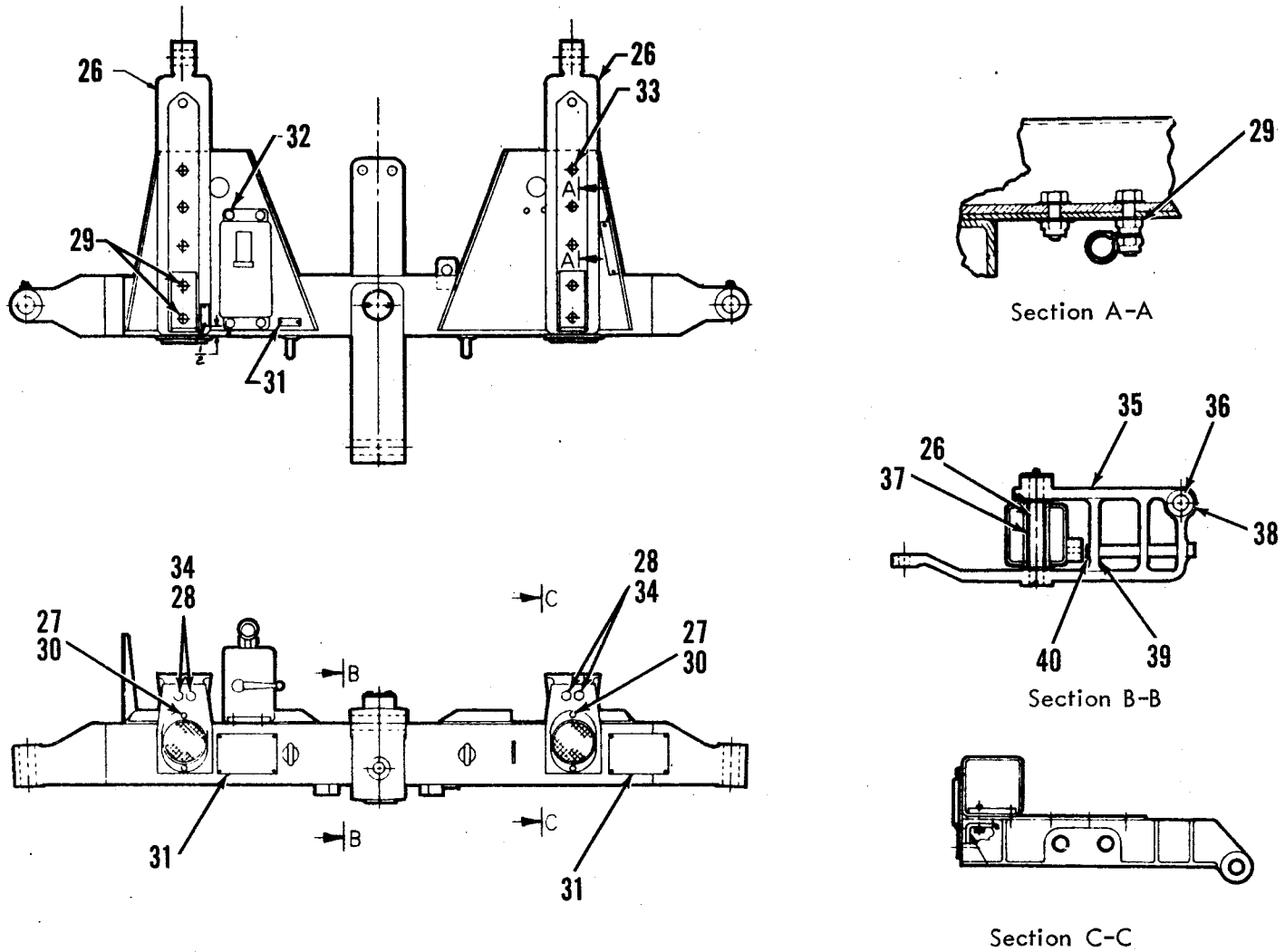


FIGURE 2. FRONT AXLE ASSEMBLY (SHEET 2 OF 2)

SMR CODE	FEDERAL STOCK NUMBER	DESCRIPTION	USABLE ON CODE	UNIT OF MEAS	QTY INC IN UNIT	15-DAY ORG MAINT ALW				30-DAY ORG MAINT ALW			1-YR ALW PER 100 EQP CNTY	ILLUSTRATION FIG NO	ITEM NO
						1-5	6-20	21-50	51-100	1-20	21-50	51-100			
	1740-901-1870	7400017-502 (26678)	A	EA										1	
	1740-902-3132	7400050-501 (26678)	B	EA										1	
SECTION III REPAIR PARTS															
GROUP 1.1 AXLE ASSEMBLY															
P--O--	2530-728-8109	7400012-502 (16128)	A	EA	1	*	*	*	*	*	*	*		2	1
		7400052-501 (16128)	B	EA	1	*	*	*	*	*	*	*		2	1
P--O--	2510-911-5233	B3373-43 (16128)	A	EA	2	*	*	*	*	*	*	*		2	2
P--O--	4720-068-6569	6967003-504 (16128)		EA	2	*	*	*	*	*	*	*		2	3
P--O--	4730-911-5680	4-4GTXS (45681)		EA	2	*	*	*	*	*	*	*		2	5
P--O--	2510-911-5231	B3373-76 (24835)		EA	2	*	*	*	*	*	*	*		2	5
P--O--	2510-911-5232	B3373-44 (16128)	A	EA	2	*	*	*	*	*	*	*		2	6
P--O--	4010-310-0867	6600057-501 (16128)	A	EA	2	*	*	*	*	*	*	*		2	7
P--O--	4010-127-7934	5600103-001 (16128)	B	EA	2	*	*	*	*	*	*	*		2	8
P--O--	4730-892-5346	B2808-54 (16128)		EA	2	*	*	*	*	*	*	*		2	10
P--O--	4730-911-5707	B3010A102 (16128)		EA	2	*	*	*	*	*	*	*		2	11
P--O--	4730-911-5688	4FNUS (45681)		EA	1	*	*	*	*	*	*	*		2	12
P--O--	5310-012-0380	MS35338-25 (96906)		EA	6	*	*	*	*	*	*	*		2	13
P--O--	5310-167-0826	AN960-1216 (88044)		EA	6	*	*	*	*	*	*	*		2	14
P--O--	5305-988-1723	MS35206-279 (96906)	A	EA	2	*	*	*	*	*	*	*		2	15
P--O--	5315-814-3531	MS16562-50 (96906)		EA	6	*	*	*	*	*	*	*		2	16
P--O--	5340-911-5709	B2808-167 (16128)	B	EA	3	*	*	*	*	*	*	*		2	17
P--O--	5310-087-7493	MS27183-13 (96906)		EA	2	*	*	*	*	*	*	*		2	18
P--O--	5310-811-3494	MS21044N08 (96906)	A	EA	2	*	*	*	*	*	*	*		2	19
P--O--	5305-253-5612	MS21318-15 (96906)		EA	8	*	*	*	*	*	*	*		2	20
P--O--	5305-984-6193	MS35206-245 (96906)	A	EA	2	*	*	*	*	*	*	*		2	21
P--O--	5340-911-5706	B2808-68 (16128)	B	EA	5	*	*	*	*	*	*	*		2	
P--O--	2530-728-8103	B3373-16-4 (16128)	B	EA	2	*	*	*	*	*	*	*		2	22
X2-O--		697007-003 (16128)	B	EA	2									2	
P--O--	5310-141-1795	AN960-416 (88044)	A	EA	2	*	*	*	*	*	*	*		2	
P--O--	5340-371-4134	B2808-98 (16128)	B	EA	3	*	*	*	*	*	*	*		2	23
P--O--	5310-761-6882	MS51967-2 (96906)		EA	2	*	*	*	*	*	*	*		2	23
P--O--	5305-225-3840	MS90725-7 (96906)	A	EA	2	*	*	*	*	*	*	*		2	
X2-O--		7400026-501 (16128)	A	EA	1									2	24
P--O--	2530-910-1089	B2530-22 (16128)		EA	2	*	*	*	*	*	*	*		2	25
P--O--	5305-978-9353	MS16997-43 (96906)		EA	2	*	*	*	*	*	*	*		2	26
P--O--	5310-012-0380	MS35338-25 (96906)		EA	4	*	*	*	*	*	*	*		2	27
P--O--	5305-988-1723	MS35206-279 (96906)		EA	4	*	*	*	*	*	*	*		2	28

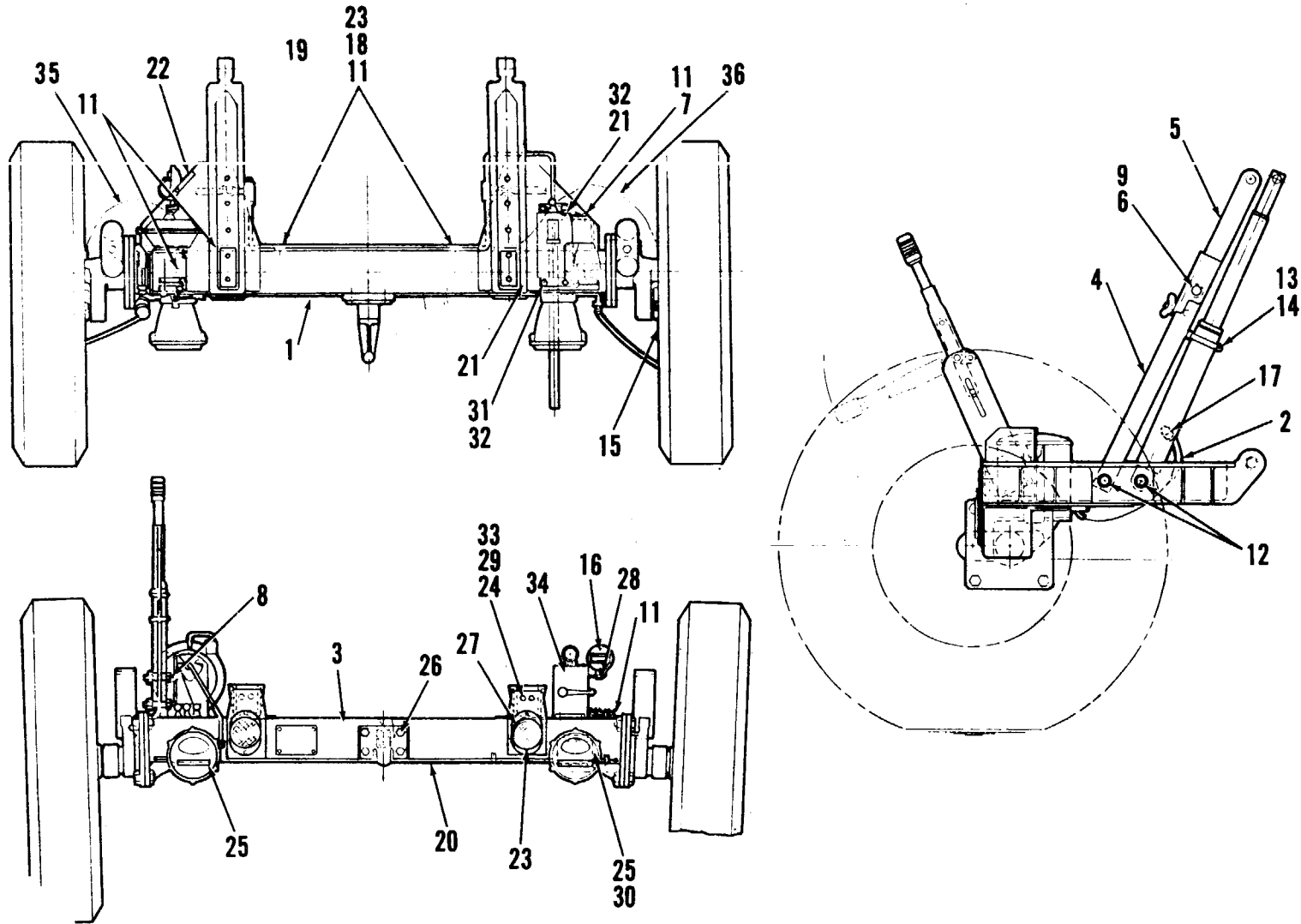


FIGURE 3. REAR AXLE ASSEMBLY

SMR CODE	FEDERAL STOCK NUMBER	DESCRIPTION	REFERENCE NUMBER & MFR CODE	USABLE ON CODE	UNIT OF MEAS	QTY INC IN UNIT	15-DAY ORG MAINT ALW				30-DAY ORG MAINT ALW			1-YR ALW PER 100 EQP	ILLUSTRATION	
							1-5	6-20	21-50	51-100	1-20	21-50	51-100	CNTY	FIG NO	ITEM NO
GROUP 1.1 CONTINUED																
P--O--	5310-407-9566	MS35338-45	(96906)		EA	6	*	*	*	*	*	*		2	29	
P--O--	5310-637-9541	MS35338-46	(96906)		EA	14	*	*	*	*	*	*		2	30	
P--O--	5305-175-3230	MS21318-14	(96906)		EA	14	*	*	*	*	*	*		2	31	
P--O--	5310-167-0820	AN960-516	(88044)		EA	2	*	*	*	*	*	*		2	32	
P--O--	5310-167-0821	AN960-616	(88044)		EA	10	*	*	*	*	*	*		2	33	
P--O--	5305-269-2805	MS90726-62	(96906)		EA	4	*	*	*	*	*	*		2		
P--O--	5306-225-9089	MS90726-34	(96906)		EA	4	*	*	*	*	*	*		2	34	
P--O--	4720-725-2896	697006-011	(16128)	A	EA	1	*	*	*	*	*	*		2		
		6400026-501	(16128)			1								2		
P--O--	1740-816-0735	7400027-001	(16128)		EA	1	*	*	*	*	*	*		2	35	
P--O--	3120-689-6333	5600245-001	(16128)		EA	1	*	*	*	*	*	*		2	36	
P--O--	3120-689-6332	5600245-002	(16128)		EA	2	*	*	*	*	*	*		2	37	
P--O--	4730-050-4203	MS15001-1	(96906)		EA	1	*	*	*	*	*	*		2	38	
P--O--	5315-063-3716	NAS561C4-22	(80205)		EA	1	*	*	*	*	*	*		2	39	
P--O--	5310-167-0842	AN960-1216L	(88044)		EA	1	*	*	*	*	*	*		2	40	
P--O--	2530-728-8107	7400020-502	(16128)	A	EA	1	*	*	*	*	*	*		3	1	
		7400055-501	(16128)	B		1								3	1	
P--O--	4720-068-6569	6967003-504	(16128)		EA	2	*	*	*	*	*	*		3	2	
P--O--	2530-728-8111	7400019-502	(16128)	A	EA	1	*	*	*	*	*	*		3	3	
P--O--	2510-911-5233	B3373-43	(16128)	A	EA	2	*	*	*	*	*	*		3	4	
P--O--	2510-911-5232	B3373-44	(16128)	A	EA	2	*	*	*	*	*	*		3	5	
P--O--	2510-911-5231	B3373-76	(16128)		EA	2	*	*	*	*	*	*		3	6	
P--O--	5310-761-6882	MS51967-2	(96906)	A	EA	4	*	*	*	*	*	*		3	7	
P--O--	5310-088-0553	MS21044N5	(96906)	A	EA	4	*	*	*	*	*	*		3	9	
P--O--	5310-167-0826	AN960-1216	(88044)		EA	6	*	*	*	*	*	*		3	9	
P--O--	5305-988-1723	MS35206-279	(96906)		EA	4	*	*	*	*	*	*		3	10	
P--O--	5310-012-0380	MS35338-25	(96906)		EA	8	*	*	*	*	*	*		3	11	
P--O--	5315-814-3531	MS16562-50	(96906)		EA	6	*	*	*	*	*	*		3	12	
P--O--	5305-984-6193	MS35206-245	(96906)	A	EA	2	*	*	*	*	*	*		3	13	
P--O--	5310-811-3494	MS21044N08	(96906)	A	EA	2	*	*	*	*	*	*		3	14	
P--O--	5310-637-9541	MS35338-46	(96906)	A	EA	4	*	*	*	*	*	*		3	15	
P--O--	5310-407-9566	MS35338-45	(96906)		EA	1	*	*	*	*	*	*		3	16	
P--O--	5315-839-5820	MS24665-134	(96906)	A	EA	2	*	*	*	*	*	*		3		
P--O--	5310-911-5681	B2808-72	(16128)		EA	3	*	*	*	*	*	*		3	17	
P--O--	5340-845-0120	B2808-168	(16128)		EA	5	*	*	*	*	*	*		3	18	
P--O--	2530-910-1089	B2530-22	(24835)		EA	2	*	*	*	*	*	*		3	19	
P--O--	2530-728-8112	7400031-501	(16128)	A	EA	1	*	*	*	*	*	*		3	20	
P--O--	5305-175-3230	MS21318-14	(96906)		EA	14	*	*	*	*	*	*		3	21	
P--O--	5310-167-0821	AN960-616	(88044)	A	EA	6	*	*	*	*	*	*		3	22	
P--O--	5305-988-1723	MS35206-279	(96906)		EA	4	*	*	*	*	*	*		3	23	
P--O--	5310-637-9541	MS35338-46	(96906)		EA	14	*	*	*	*	*	*		3	24	
P--O--	5310-012-0380	MS35338-25	(96906)		EA	4	*	*	*	*	*	*		3	25	
P--O--	5310-012-0384	MS35338-29	(96906)		EA	4	*	*	*	*	*	*		3	26	
P--O--	9905-205-2795	MS35387-1	(96906)		EA	2	*	*	*	*	*	*		3	27	

TM55-1740-201-23P

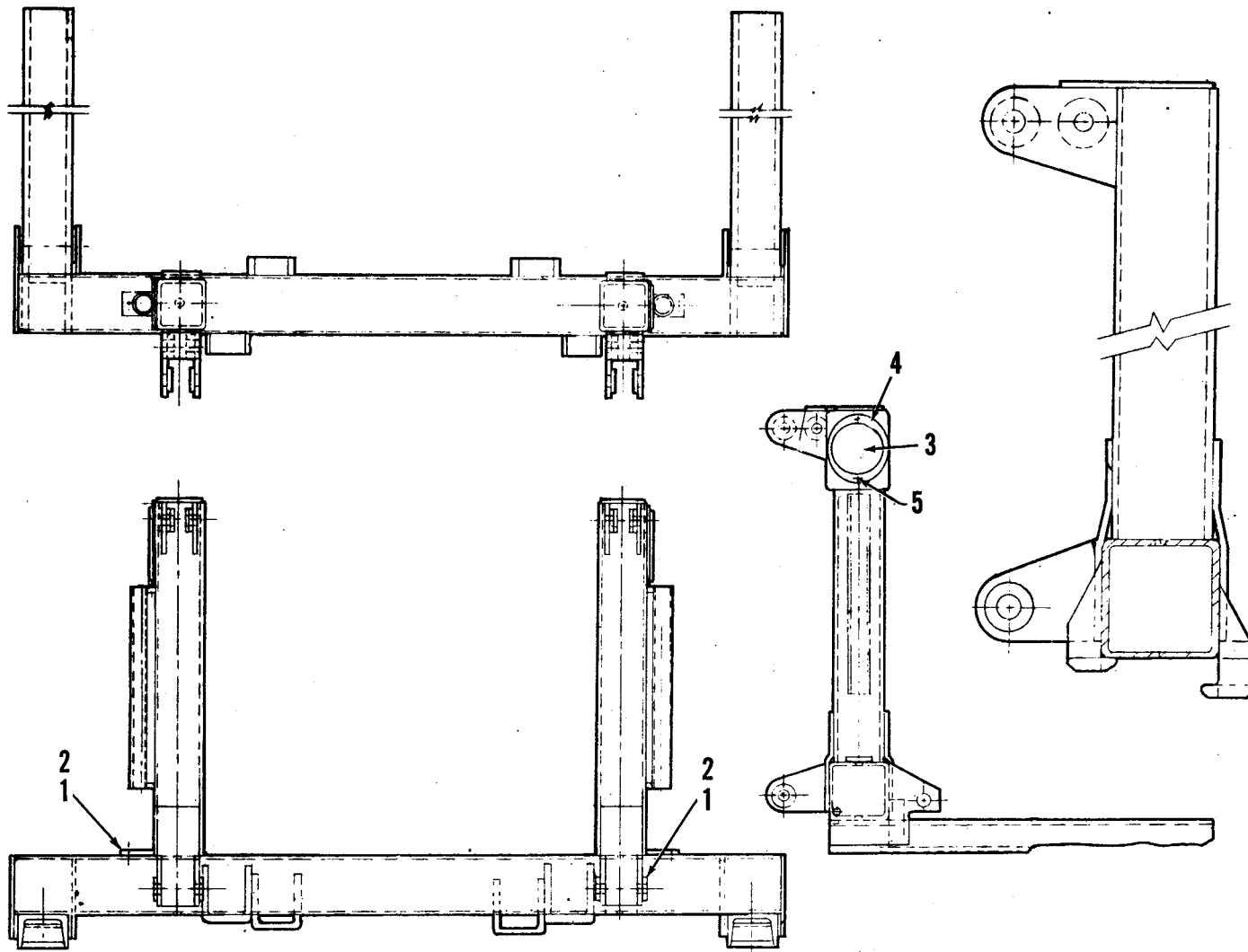


FIGURE 4. ADAPTER ASSEMBLY

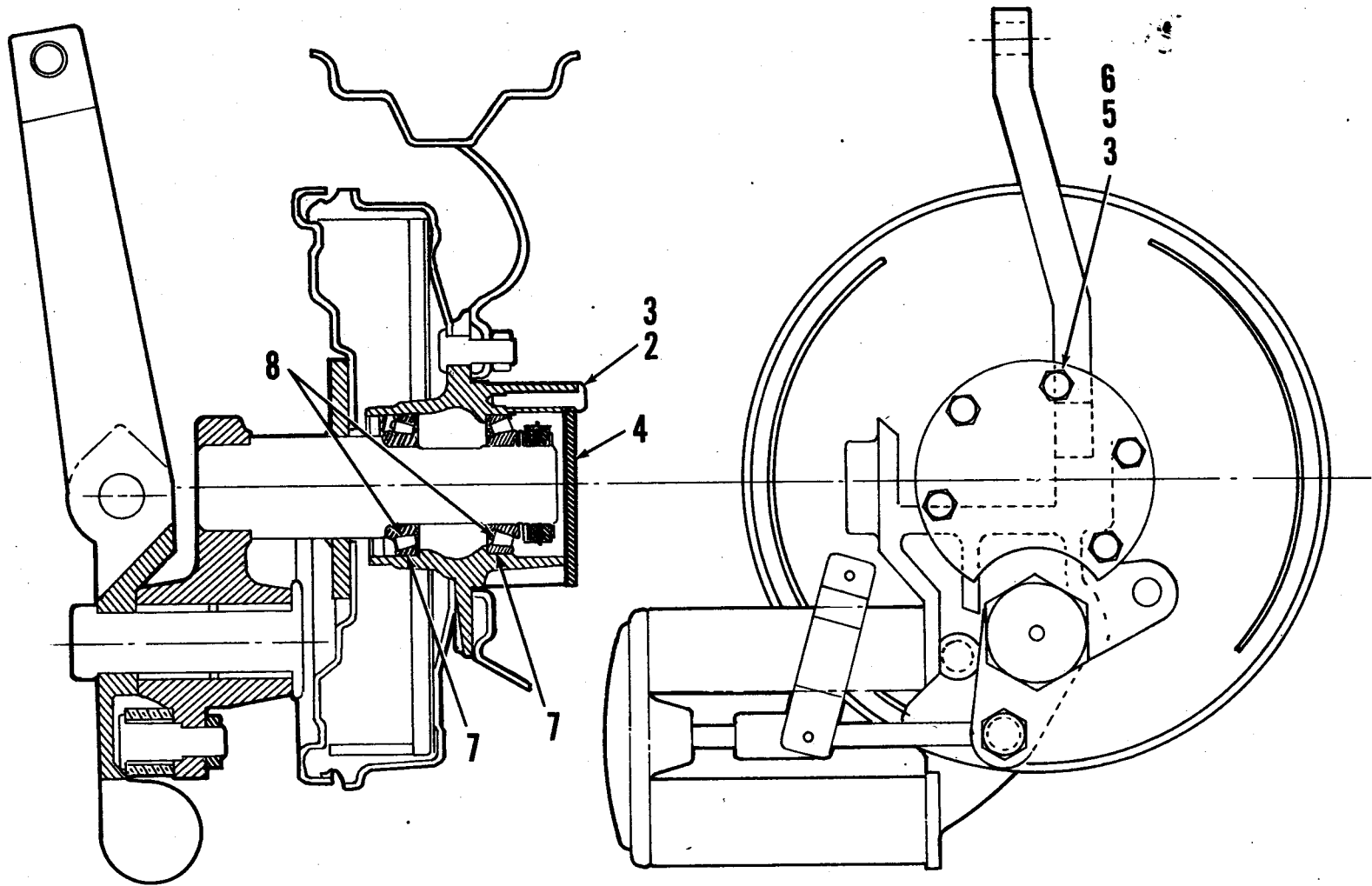


FIGURE 5. WHEELS AND BEARING

SMR CODE	FEDERAL STOCK NUMBER	DESCRIPTION	REFERENCE NUMBER & MFR CODE	USABLE ON CODE	UNIT OF MEAS	QTY INC IN UNIT	15-DAY ORG MAINT ALW			30-DAY ORG MAINT ALW			1-YR ALW PER 100 EQP CNTY	ILLUSTRATION FIG NO	ITEM NO
							1-5	6-20	21-50	51-100	1-20	21-50	51-100		
GROUP 1.1 CONTINUED															
P--O--	5340-911-5700	B3100-15	(16128)		EA	1	*	*	*	*	*	*		3	28
P--O--	5305-269-2805	MS90726-62	(96906)		EA	4	*	*	*	*	*	*		3	29
X2-O--		B3100-13	(24835)		EA	2								3	30
P--O--	5310-407-9566	MS3533845	(96906)		EA	4	*	*	*	*	*	*		3	31
P--O--	5306-225-9089	MS90726-34	(96906)	A	EA	4	*	*	*	*	*	*		3	32
P--O--	5305-269-2805	MS90726-62	(96906)	A	EA	4	*	*	*	*	*	*		3	33
P--O--	4320-070-4506	B2808-175	(24835)		EA	1	*	*	*	*	*	*		3	
P--O--	2540-689-6303	5400029-501	(16128)		EA	4	*	*	*	*	*	*		3	
X2-O--		B2740-103-10	(92867)	R	EA	1								3	35
X2-O--		B2740-103-11	(92867)	L	EA	1								3	36
GROUP 1.2 ADAPTER ASSEMBLY															
P--O--	2530-728-8102	7400016-501	(16128)	A	EA	1	*	*	*	*	*	*		4	
P--O--	2530-728-8101	7400016-502	(16128)	A	EA	1	*	*	*	*	*	*		4	
		7400056-501	(16128)	B		1								4	
		7400056-502	(16128)	B		1								4	
P--O--	5340-889-7268	440003-001	(16128)		EA	2	*	*	*	*	*	*		4	1
P--O--	5305-988-1723	MS35206-279	(96906)		EA	10	*	*	*	*	*	*		4	2
P--O--	9905-205-2795	MS35387-1	(96906)	B	EA	2	*	*	*	*	*	*	*	4	3
P--O--	9905-202-3639	MS35387-2	(96906)	B	EA	2	*	*	*	*	*	*	*	4	4
P--O--	5310-012-0380	MS35338-25	(96906)	B	EA	8	*	*	*	*	*	*	*	4	5
GROUP 1.4 WHEELS AND TIRES															
	2530-00-728-8104	7400024-501	(16128)	A		1								5	
	2530-00-728-8105	7400024-502	(16128)	A		1								5	
		7400057-501	(16128)			1								5	
		7400057-302	(16128)	B		1								5	
		7400025-501	(16128)	A		1								5	
		7400025-502	(16128)	A		1								5	
		7400058-501	(16128)	B		1								5	
		7400058-502	(16128)	B		1								5	
P--O--	2610-678-1363	MS35388-93	(96906)		EA	4	*	*	*	*	*	*		5	
P--O--	2610-269-7332	MS35392-8	(96906)		EA	4	*	*	*	*	*	*		5	
		7387807	(21450)												

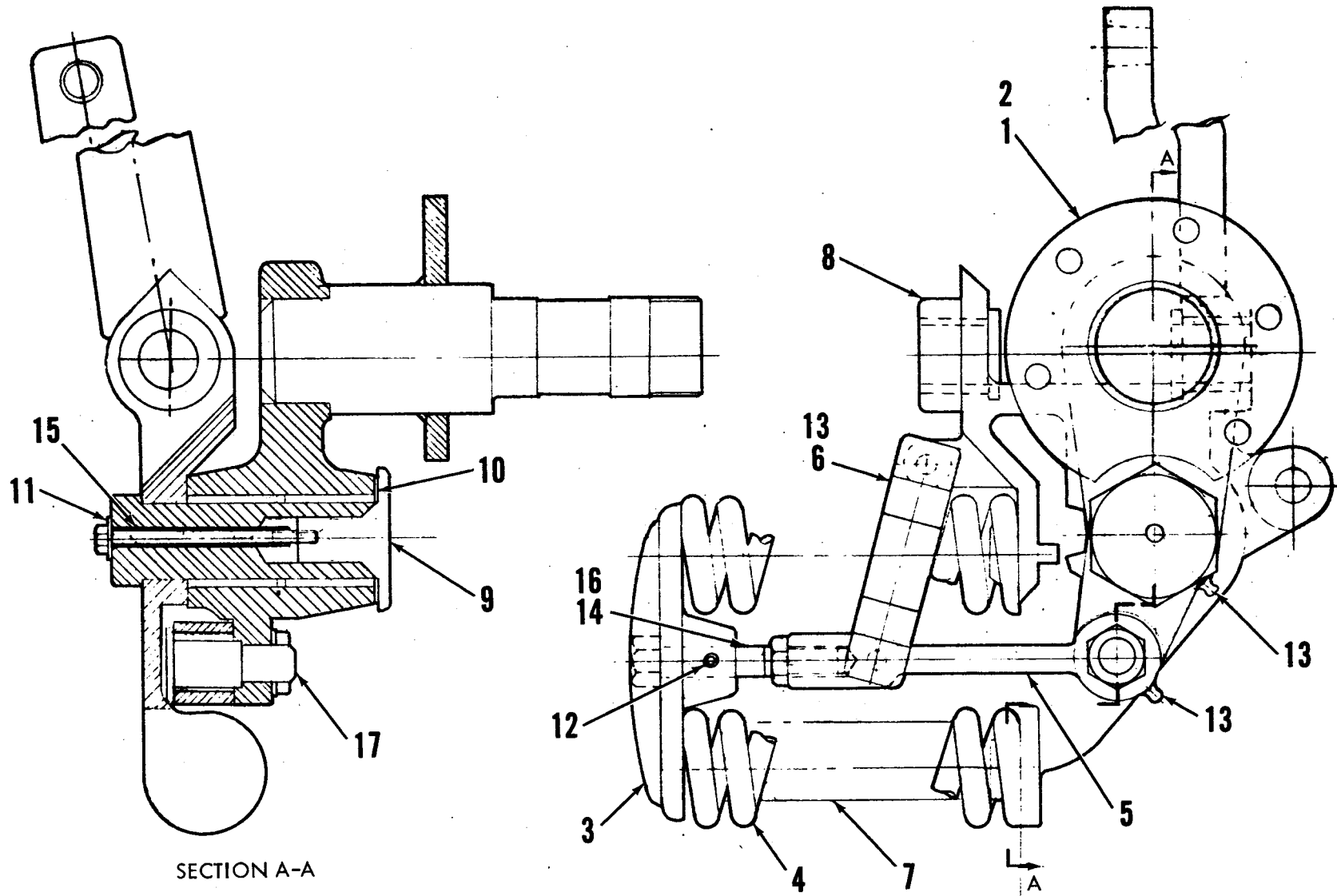
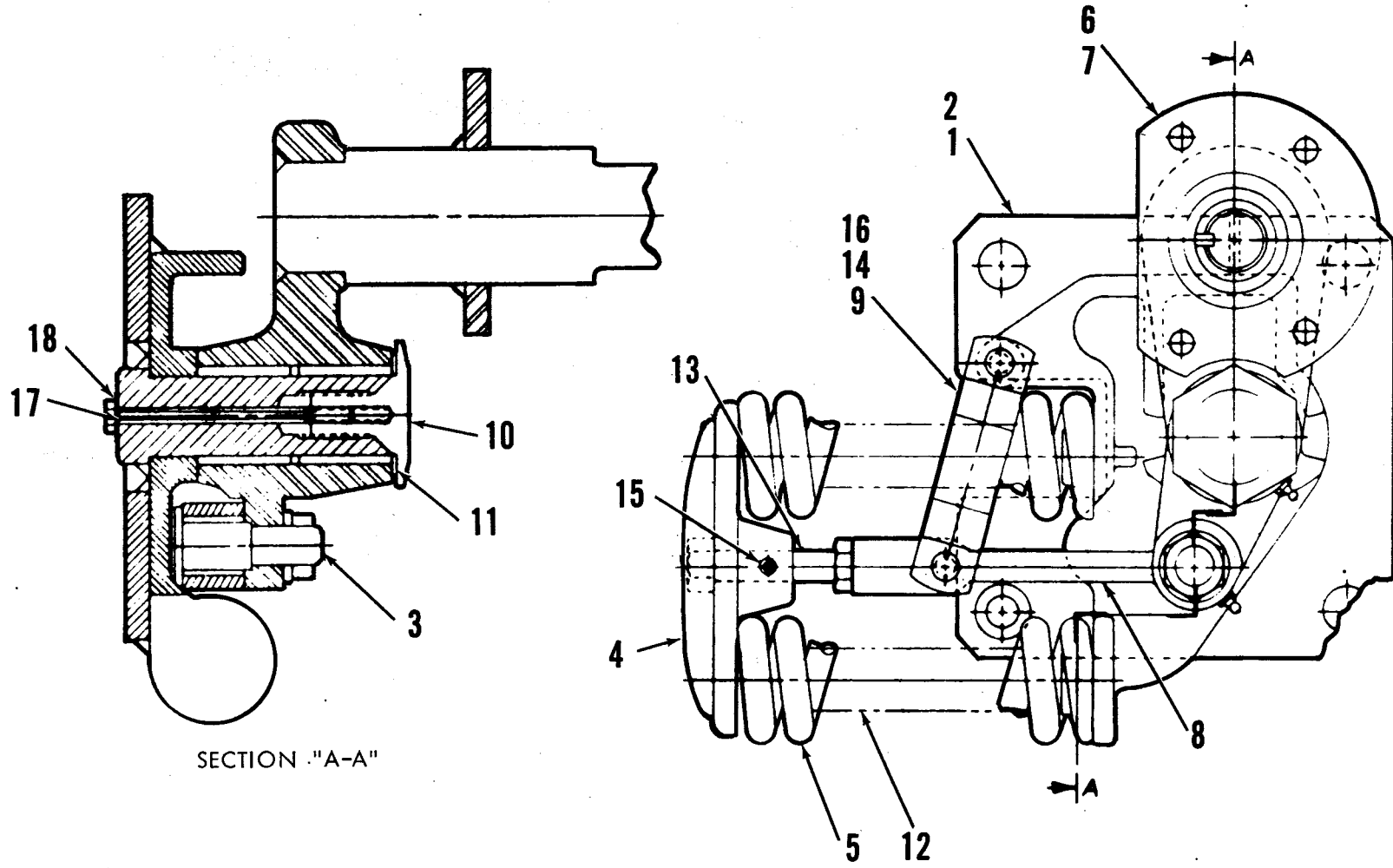


FIGURE 6. SUSPENSION ASSEMBLY, FRONT

SMR CODE	FEDERAL STOCK NUMBER	DESCRIPTION	REFERENCE NUMBER & MFR CODE	USABLE ON CODE	UNIT OF MEAS	QTY INC IN UNIT	15-DAY ORG				30-DAY ORG			1-YR	ILLUSTRATION		
							MAINT	ALW			1-20	21-50	51-100	ALW	PER	100	FIG
							1-5	6-20	21-50	51-100	1-20	21-50	51-100	EQP	CNTY	NO	NO
GROUP 1.4 CONTINUED																	
P--O--	5310-523-2405	24575	(33116)		.NUT, CONE SEAT, HEXAGON, RH	EA	10	*	*	*	*	*	*	*		5	1
P--O--	5305-269-3210	MS90725-59	(96906)		.SCREW, CAP, HEXAGON HEAD	EA	24	*	*	*	*	*	*	*		5	2
P--O--	5310-637-9541	MS35338-46	(96906)		.WASHER, LOCK	EA	24	*	*	*	*	*	*	*		5	3
P--O--	1055-336-6209	27854	(33116)		.COVER PLATE	EA	24	*	*	*	*	*	*	*		5	4
P--O--	5310-732-0559	MS1968-8	(96906)		.NUT, PLAIN, HEXAGON	EA	24	*	*	*	*	*	*	*		5	5
P--O--	5305-269-2803	MS90726-60	(96906)		.SCREW, CAP, HEXAGON HEAD	EA	24	*	*	*	*	*	*	*		5	6
P--O--	5340-290-7222	6	(95760)		.CAP-PLUG, PROTECTIVE, DUST AND MOISTURE SEAL	EA	2	*	*	*	*	*	*	*		5	
GROUP 1.6 BEARINGS																	
P--O--	3110-100-3526	18590	(60038)		CONE AND ROLLERS, TAPERED ROLLING BEARING	EA	16	*	*	*	*	*	*	*		5	7
P--O--	3110-183-9946	MS19081-58	(96906)		CUP, TAPERED ROLLER BEARING	EA	16	*	*	*	*	*	*	*		5	8
GROUP 1.7 SUSPENSION ASSEMBLY																	
P--O--	2530-725-5661	7400030-501	(16128)		SUSPENSION ASSEMBLY, FRONT, 1H	A	EA	1	*	*	*	*	*	*		6	
P--O--	2530-725-5660	7400030-502	(16128)		SUSPENSION ASSEMBLY, FRONT, RH	A	EA	1	*	*	*	*	*	*		6	
		740073-501	(16128)		SUSPENSION ASSEMBLY, FRONT, 1H	B		1								6	
		740073-502	(16128)		SUSPENSION ASSEMBLY, FRONT, RH	B		1								6	
P--O--	2530-707-3525	6400017-502	(16128)		.BRACKET ASSEMBLY, SPINDLE, RH	A	EA	1	*	*	*	*	*	*		6	1
P--O--	2530-707-3528	6400017-501	(16128)		.BRACKET ASSEMBLY, SPINDLE, 1H	A	EA	1	*	*	*	*	*	*		6	3
P--O--	1450-996-7218	B1592-206	(24835)		.CAP, SPRING	EA	2	*	*	*	*	*	*	*		6	3
P--O--	1450-996-7217	B1592-207	(16128)		.SPRING, HELICAL, COMPRESSION	EA	4	*	*	*	*	*	*	*		6	4
P--O--	2590-911-5220	B1592-212	(16128)		.ROD ASSEMBLY, CONNECTING	EA	2	*	*	*	*	*	*	*		6	5
P--O--	1450-955-0507	B1592-214	(16128)		.RETAINER ASSEMBLY	EA	2	*	*	*	*	*	*	*		6	6
P--O--	2590-911-5277	B1592-224	(16128)		.PLUG, COMPRESSION	EA	4	*	*	*	*	*	*	*		6	7
P--O--	2540-911-5265	B2530-81	(16128)		.WASHER, RETAINER	EA	2	*	*	*	*	*	*	*		6	8
P--O--	5306-955-0499	B2715-9	(24835)		.BOLT, SHOULDER	EA	2	*	*	*	*	*	*	*		6	9
P--O--	5306-097-8952	B3417-51	(16128)		.BOLT, SELF-LOCKING, HEXAGON	EA	2	*	*	*	*	*	*	*		6	10
P--O--	5306-935-7558	B3522-20	(16128)		.BOLT, INTERNALLY RELIEVED BODY	EA	2	*	*	*	*	*	*	*		6	11
P--O--	5315-844-3956	MS16562-27	(96906)		.PIN, SPRING	EA	2	*	*	*	*	*	*	*		6	12
P--O--	4730-050-4205	MS15001-3	(96906)		.FITTING, LUBRICATION	EA	4	*	*	*	*	*	*	*		6	13
P--O--	5305-716-8180	MS90726-119	(96906)		.SCREW, CAP, HEXAGON HEAD	EA	2	*	*	*	*	*	*	*		6	14
P--O--	5310-167-0820	AN960-516	(88044)		.WASHER, FLAT	EA	4	*	*	*	*	*	*	*		6	15



SECTION "A-A"

FIGURE 7. SUSPENSION ASSEMBLY, REAR

TM55-1740-201-23P

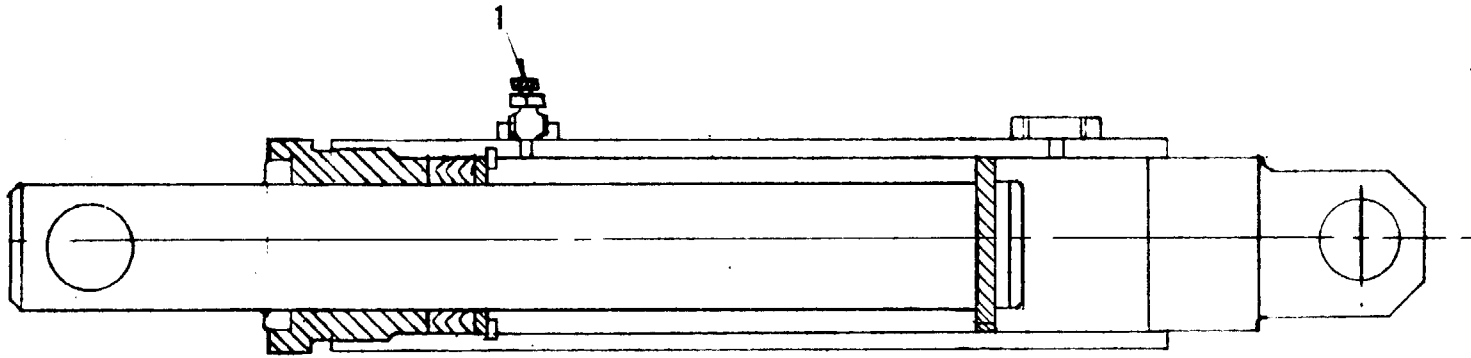


FIGURE 8. HYDRAULIC CYLINDER

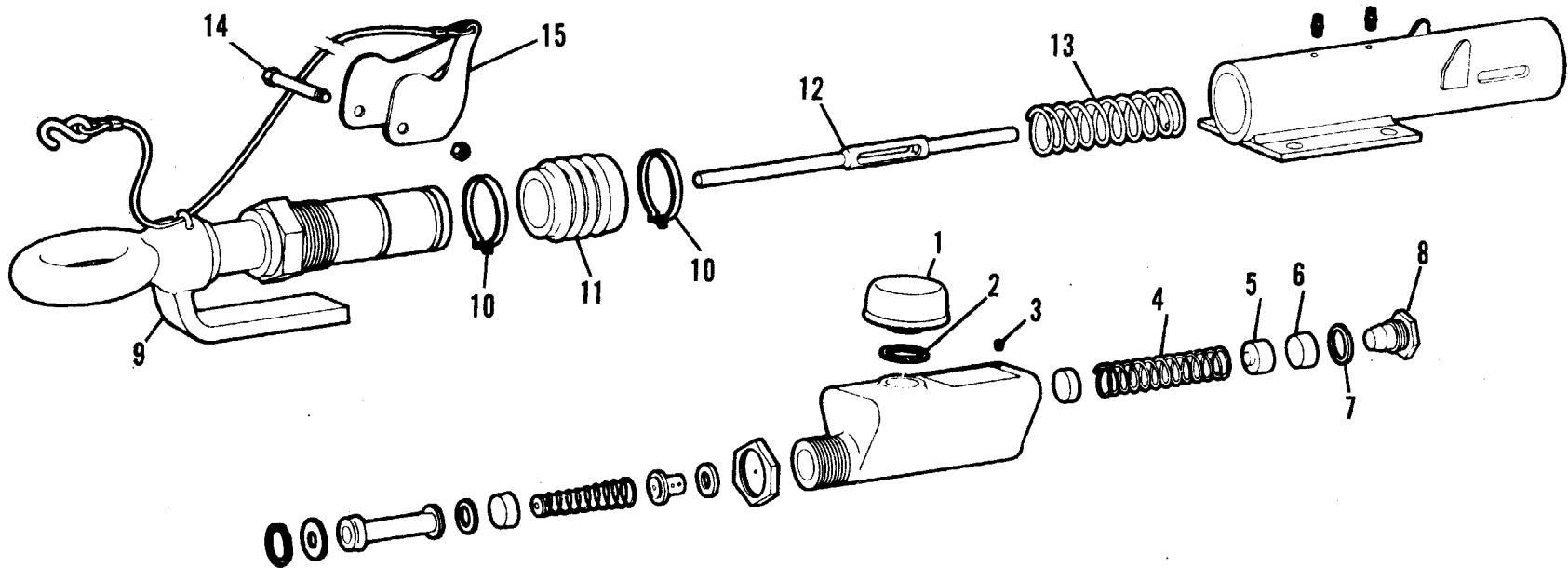


FIGURE 9. SURGE BRAKE ACTUATOR

SMR CODE	FEDERAL STOCK NUMBER	DESCRIPTION	REFERENCE NUMBER & MFR CODE	USABLE ON CODE	UNIT OF MEAS	QTY INC IN UNIT	15-DAY ORG MAINT ALW				30-DAY ORG MAINT ALW			1-YR ALW PER 100 EQP	ILLUSTRA- TION	
							1-5	6-20	21-50	51-100	1-20	21-50	51-100	CNTY	FIG NO	ITEM NO
GROUP 1.7 CONTINUED																
P--O--	5310-141-1795	AN960-416	(88044)		.WASHER,FLAT	EA	2	*	*	*	*	*	*	*	6	16
P--O--	5310-820-6653	MS35337-50	(96906)		.WASHER,LOCK	EA	2	*	*	*	*	*	*	*	6	17
P--O--	2530-707-3477	7400022-501	(16128)	A	SUSPENSION ASSEMBLY,REAR 1H	EA	1	*	*	*	*	*	*	*	7	
P--O--	2530-707-3505	7400022-502	(16128)		SUSPENSION ASSEMBLY,REAR RH	EA	1	*	*	*	*	*	*	*	7	
		7400059-501	(16128)	B	SUSPENSION ASSEMBLY,REAR, 1H		1								7	
		7400059-502	(16128)	B	SUSPENSION ASSEMBLY,REAR,RH		1								7	
P--O--	2540-911-5275	B2200-32-1	(24835)		.HINGE ASSEMBLY,MOUNTING, 1H	EA	1	*	*	*	*	*	*	*	7	1
P--O--	2540-911-5276	B2200-32-2	(24835)		.HINGE ASSEMBLY,MOUNTING,RH	EA	1	*	*	*	*	*	*	*	7	2
P--O--	5306-955-0499	B2715-9	(24835)		.BOLT, SHOULDER	EA	2	*	*	*	*	*	*	*	7	3
P--O--	1450-996-7218	B1592-206	(24835)		.CAP, SPRING	EA	2	*	*	*	*	*	*	*	7	4
P--O--	1450-996-7217	B1592-207	(16128)		.SPRING,HELICAL,COMPRESSION	EA	4	*	*	*	*	*	*	*	7	5
P--O--	2530-707-3528	6400017-501	(16128)	A	.BRACKET ASSEMBLY,SPINDLE, 1H	EA	1	*	*	*	*	*	*	*	7	6
P--O--	2530-707-3525	6400017-502	(16128)	A	.BRACKET ASSEMBLY,SPINDLE,RH	EA	1	*	*	*	*	*	*	*	7	7
P--O--	2590-911-5220	B1592-212	(16128)		.ROD ASSEMBLY	EA	2	*	*	*	*	*	*	*	7	8
P--O--	1450-955-0507	B1592-214	(16128)		.RETAINER ASSEMBLY	EA	2	*	*	*	*	*	*	*	7	9
P--O--	5306-935-7558	B3522-20	(16128)		.BOLT, INTERNALLY RELIEVED BODY	EA	2	*	*	*	*	*	*	*	7	10
P--O--	2540-911-5265	B2530-81	(16128)		.WASHER,RETAINER	EA	2	*	*	*	*	*	*	*	7	11
P--O--	2590-911-5277	B1592-224	(16128)		.PLUG,COMPRESSION	EA	4	*	*	*	*	*	*	*	7	12
P--O--	5305-716-8180	MS90726-119	(96906)		.SCREW,CAP,HEXAGON HEAD	EA	2	*	*	*	*	*	*	*	7	13
P--O--	5310-167-0820	AN960-516	(88044)		.WASHER,FLAT	EA	2	*	*	*	*	*	*	*	7	14
P--O--	5315-844-3956	MS16562-27	(96906)		.PIN,SPRING	EA	4	*	*	*	*	*	*	*	7	15
P--O--	5310-012-1514	MS35338-31	(96906)		.WASHER,LOCK	EA	2	*	*	*	*	*	*	*	7	16
P--O--	5306-097-8952	B3417-51	(16128)		.BOLT,SELF-LOCKING,HEXAGON	EA	4	*	*	*	*	*	*	*	7	17
P--O--	5310-141-1795	AN960-416	(88044)		.WASHER,FLAT	EA	2	*	*	*	*	*	*	*	7	18
GROUP 2.0 HYDRAULIC SYSTEM																
GROUP 2.1 CYLINDER ASSEMBLY																
P--O--	4820-674-2314	6400066-501 H823	(16128) (95406)	B B	HYDRAULIC CYLINDER,SINGLE ACTING .VALVE,AIR VENT		1 EA		*	*	*	*	*	*	8 8	

SMR CODE	FEDERAL STOCK NUMBER	DESCRIPTION		REFERENCE NUMBER & MFR CODE	USABLE ON CODE	UNIT OF MEAS	QTY INC IN UNIT	15-DAY ORG MAINT ALW			30-DAY ORG MAINT ALW			1-YR ALW	ILLUSTRATION	
								1-5	6-20	21-50	51-100	1-20	21-50	51-100	PER 100 EQP CNTY	FIG NO
				GROUP 2.3 PUMP												
P--O--	4320-911-5679	HP6001-51-05	(07505)	PUMP, HYDRAULIC	EA	1	*	*	*	*	*	*	*		3	4
				GROUP 2.5 TOWBAR												
X2-O--	2530-00-472-8174	622325	(93072)	SURGE BRAKE ACTUATOR	B	1										9
		622151	(93072)	.CAP, FILLER	B	EA	1									9
P--O--	2530-105-4474	580342	(93072)	.GASKET	B	EA	1	*	*	*	*	*	*			9
P--O--	4310-135-8858	580255-1	(93072)	.BLEEDER ASSEMBLY	B	EA	1	*	*	*	*	*	*			9
P--O--	2540-135-6406	622089	(93072)	.SPRING	B	EA	1	*	*	*	*	*	*			9
X2-O--	2530-00-105-4479	580382	(93072)	.SEAT, SPRING	B	EA	1									9
X2-O--	2530-00-105-4475	580334	(93072)	.CUP, CYLINDER, BRAKE	B	EA	1									9
P--O--	5340-602-7905	57623	(93072)	.SPACER, RING	B	EA	1	*	*	*	*	*	*			9
P--O--	2530-105-4476	57683	(93072)	.RETAINER, ACCUMULATOR	B	EA	1	*	*	*	*	*	*			9
X2-O--	2540-00-125-8542	622060-2	(93072)	.TOWBAR ASSEMBLY	B	EA	1									9
X2-O--	2530-00-400-2229	580546	(93072)	.RING, BRAKE	B	EA	2									9
P--F--	1740-088-0581	621001	(93072)	.BELLOWS, RUBBER	B	EA	1				*	*	*			9
X2-O--	2530-00-105-1429	622161	(93072)	.ROD, CYLINDER, BRAKE	B	EA	1									9
P--O--	2540-135-6405	622214	(93072)	.SPRING	B	EA	1	*	*	*	*	*	*			9
P--O--	5306-400-3519	622175	(93072)	.BOLT, MACHINE	B	EA	1	*	*	*	*	*	*			9
X2-O--	2530-00-400-2227	622162	(93072)	.LEVER, BRAKE	B	EA	1									9
P--O--	2530-911-5675	6967008-503	(16128)	HARNES ASSEMBLY, ELECTRICAL, INTERVEHICULAR	A	EA	1	*	*	*	*	*	*			9
P--O--	2540-911-5692	3670052-4	(16128)	CABLE ASSEMBLY, TIE	EA	2	*	*	*	*	*	*	*			9

SECTION V TM55-1740-201-23P
 FEDERAL STOCK NUMBER AND REFERENCE NUMBER INDEX

STOCK NUMBER	FIGURE NUMBER	ITEM NUMBER	STOCK NUMBER	FIGURE NUMBER	ITEM NUMBER
1055-336-6209	5	4	5305-175-3230	2	31
1450-955-0507	6	6	5305-175-3230	3	21
1450-955-0507	7	9	5305-225-3840	2	
1450-996-7217	6	4	5305-253-5612	2	20
1450-996-7217	7	5	5305-269-2803	5	6
1450-996-7218	6	3	5305-269-2805	2	
1450-996-7218	7	4	5305-269-2805	3	29
1740-088-0581	9	11	5305-269-2805	3	33
1740-816-0735	2	35	5305-269-3210	5	2
1740-901-1870	1		5305-716-8180	6	14
1740-902-3132	1		5305-716-8180	7	13
2510-911-5231	2	5	5305-978-9353	2	26
2510-911-5231	3	6	5305-984-6193	2	21
2510-911-5232	2	6	5305-984-6193	3	13
2510-911-5232	3	5	5305-988-1723	2	15
2510-911-5233	2	2	5305-988-1723	2	28
2510-911-5233	3	4	5305-988-1723	3	10
2530-105-4474	9	2	5305-988-1723	3	23
2530-105-4476	9	8	5305-988-1723	4	2
2530-707-3477	7		5306-097-8952	6	10
2530-707-3505	7		5306-097-8952	7	17
2530-707-3525	6	1	5306-225-9089	2	34
2530-707-3525	7	7	5306-225-9089	3	32
2530-707-3528	6	2	5306-400-3519	9	14
2530-707-3528	7	6	5306-935-7558	6	11
2530-725-5660	6		5306-935-7558	7	10
2530-725-5661	6		5306-955-0499	6	9
2530-728-8101	4		5306-955-0499	7	3
2530-728-8102	4		5310-012-0380	2	13
2530-728-8103	2	22	5310-012-0380	2	27
2530-728-8107	3	1	5310-012-0380	3	11
2530-728-8109	2	1	5310-012-0380	3	25
2530-728-8111	3	3	5310-012-0380	4	5
2530-728-8112	3	20	5310-012-0384	3	26
2530-910-1089	2	25	5310-012-1514	7	16
2530-910-1089	3	19	5310-087-7493	2	18
2530-911-5675	9		5310-088-0553	3	8
2540-135-6405	9	13	5310-141-1795	2	
2540-135-6406	9	4	5310-141-1795	6	16
2540-689-6303	3		5310-141-1795	7	18
2540-911-5265	6	8	5310-167-0820	2	32
2540-911-5265	7	11	5310-167-0820	6	15
2540-911-5275	7	1	5310-167-0820	7	14
2540-911-5276	7	2	5310-167-0821	2	33
2540-911-5692	9		5310-167-0821	3	22
2590-911-5220	6	5	5310-167-0826	2	14
2590-911-5220	7	8	5310-167-0826	3	9
2590-911-5277	6	7	5310-167-0842	2	40
2590-911-5277	7	12	5310-407-9566	2	
2610-269-7332	5		5310-407-9566	2	29
2610-678-1363	5		5310-407-9566	3	16
3110-100-3526	5	7	5310-407-9566	3	31
3110-183-9946	5	8	5310-523-2405	5	1
3120-689-6332	2	37	5310-637-9541	2	30
3120-689-6333	2	36	5310-637-9541	3	15
4010-127-7934	2	8	5310-637-9541	3	24
4010-310-0867	2	7	5310-637-9541	5	3
4310-135-8858	9	3	5310-732-0559	5	5
4320-070-4506	3		5310-761-6882	2	23
4320-911-5679	3	34	5310-761-6882	3	7
4720-068-6569	2	3	5310-811-3494	2	19
4720-068-6569	3	2	5310-811-3494	3	14
4720-725-2896	2		5310-820-6653	6	17
4730-050-4203	2	38	5310-911-5681	3	17
4730-050-4205	6	13	5315-063-3716	2	39
4730-892-5346	2	9	5315-814-3531	2	16
4730-911-5680	2	4	5315-814-3531	3	12
4730-911-5688		12	5315-839-5820	3	
4730-911-5689	2	10	5315-844-3956	6	12
4730-911-5707	2	11	5315-844-3956	7	15
4820-674-2314	8	1	5340-290-7222	5	

STOCK NUMBER	FIGURE NUMBER	ITEM NUMBER	STOCK NUMBER	FIGURE NUMBER	ITEM NUMBER
5340-371-4134	2		5340-911-5706	2	
5340-602-7905	9	7	5340-911-5709	2	17
5340-845-0120	3	18	9905-202-3639	4	4
5340-889-7268	4	1	9905-205-2795	3	27
5340-911-5700	3	28	9905-205-2795	4	3

REFERENCE NUMBER	MFG CODE	FIG NUMBER	ITEM NUMBER	REFERENCE NUMBER	MFG CODE	FIG NUMBER	ITEM NUMBER
AN960-1216	88044	2	14	MS35206-279	96906	2	15
AN960-1216	88044	3	9	MS35206-279	96906	2	28
AN960-1216L	88044	2	40	MS35206-279	96906	3	10
AN960-416	88044	2		MS35206-279	96906	3	23
AN960-416	88044	6	16	MS35206-279	96906	4	2
AN960-416	88044	7	18	MS35337-50	96906	6	17
AN960-516	88044	2	32	MS35338-25	96906	2	13
AN960-516	88044	6	15	MS35338-25	96906	2	27
AN960-516	88044	7	14	MS35338-25	96906	3	11
AN960-616	88044	2	33	MS35338-25	96906	3	25
AN960-616	88044	3	22	MS35338-25	96906	4	5
B1592-206	24835	6	3	MS35338-29	96906	3	26
B1592-206	24835	7	4	MS35338-31	96906	7	16
B1592-207	16128	6	4	MS35338-45	96906	2	
B1592-207	16128	7	5	MS35338-45	96906	2	29
B1592-212	16128	6	5	MS35338-45	96906	3	16
B1592-212	16128	7	8	MS35338-45	96906	3	31
B1592-214	16128	6	6	MS35338-46	96906	2	30
B1592-214	16128	7	9	MS35338-46	96906	3	15
B1592-224	16128	6	7	MS35338-46	96906	3	24
B1592-224	16128	7	12	MS35338-46	96906	5	3
B2200-32-1	24835	7	1	MS35387-1	96906	3	27
B2200-32-2	24835	7	2	MS35387-1	96906	4	3
B2530-22	16128	2	25	MS35387-2	96906	4	4
B2530-22	16128	3	19	MS35388-93	96906	5	
B2530-81	16128	6	8	MS35392-8	96906	5	
B2530-81	16128	7	11	MS51967-2	96906	2	23
B2715-9	24835	6	9	MS51967-2	96906	3	7
B2715-9	24835	7	3	MS51968-8	96906	5	5
B2808-167	16128	2	17	MS90725-59	96906	5	2
B2808-168	16128	3	18	MS90725-7	96906	2	
B2808-175	24835	3		MS90726-119	96906	6	14
B2808-49	16128	2	10	MS90726-119	96906	7	13
B2808-54	16128	2	9	MS90726-34	96906	2	34
B2808-68	16128	2		MS90726-34	96906	3	32
B2808-72	16128	3	17	MS90726-60	96906	5	6
B2808-98	16128	2		MS90726-62	96906	2	
B3010A102	16128	2	11	MS90726-62	96906	3	29
B3100-13	24835	3	30	MS90726-62	96906	3	33
B3100-15	16128	3	28	NAS561C4-22	80205	2	39
B3373-16-4	16128	2	22	18590	60038	5	7
B3373-43	16128	2	22	24575	33116	5	1
B3373-43	16128	3	4	27854	33116	5	4
B3373-44	16128	2	6	3670052-4	16128	9	
B3373-44	16128	3	5	4-4GTXS	45681	2	4
B3373-76	24835	2	5	4FNUS	45681	2	12
B3373-76	24835	3	6	4400003-001	16128	4	1
B3417-51	16128	6	10	5400029-501	16128	3	
B3417-51	16128	7	17	5600103-001	16128	2	8
B3522-20	16128	6	11	5600245-001	16128	2	36
B3522-20	16128	7	10	5600245-002	16128	2	37
HP6001-51-05	07505	3	34	57623	93072	9	7
H823	95406	8	1	57683	93072	9	8
MS15001-1	96906	2	38	580255-1	93072	9	3
MS15001-3	96906	6	13	580334	93072	9	6
MS16562-27	96906	6	12	580342	93072	9	2
MS16562-27	96906	7	15	580382	93072	9	5
MS16562-50	96906	2	16	580546	93072	9	10
MS16562-50	96906	3	12	6	95760	5	
MS16997-43	96906	2	26	621001	93072	9	11
MS19081-58	96906	5	8	622060-2	93072	9	9
MS21044N08	96906	2	19	622089	93072	9	4
MS21044N08	96906	3	14	622151	93072	9	1
MS21044N5	96906	3	8	622161	93072	9	12
MS21318-14	96906	2	31	622162	93072	9	15
MS21318-14	96906	3	21	622175	93072	9	14
MS21318-15	96906	2	20	622214	93072	9	13
MS24665-134	96906	3		622325	93072	9	
MS24665-134	96906	3		622325	93072	9	
MS35206-245	96906	2	21	6400017-501	16128	7	6
MS35206-245	96906	3	13	6400017-502	16128	6	1

REFERENCE NUMBER	MFG CODE	FIG NUMBER	ITEM NUMBER	REFERENCE NUMBER	MFG CODE	FIG NUMBER	ITEM NUMBER
6400017-502	16128	7	7	7400025-502	16128	5	
6400026-501	16128	2		7400026-501	16128	2	24
6400066-501	16128	8		7400027-001	16128	2	35
6600057-501	16128	2	7	7400030-501	16128	6	
6967003-504	16128	2	3	7400030-502	16128	6	
6967003-504	16128	3	2	7400031-501	16128	3	20
6967006-011	16128	2		7400050-501	26678	1	
6967007-003	16128	2		7400052-501	16128	2	1
6967008-503	16128	9		7400055-501	16128	3	1
7400012-502	16128	2	1	7400056-501	16128	4	
7400016-501	16128	4		7400056-502	16128	4	
7400016-502	16128	4		7400057-501	16128	5	
7400017-502	26678	1		7400057-502	16128	5	
7400019-502	16128	3	3	7400058-501	16128	5	
7400020-502	16128	3	1	7400058-502	16128	5	
7400022-501	16128	7		7400059-501	16128	7	
7400022-502	16182	7		7400059-502	16128	7	
7400024-501	16128	5		740073-501	16128	6	
7400024-502	16128	5		740073-502	16128	6	
7400025-501	16128	5					

By Order of the Secretary of the Army:

Official:

KENNETH G. WICKHAM,
Major General, United States Army,
The Adjutant General.

W. C. WESTMORELAND,
General, United States Army,
Chief of Staff.

DISTRIBUTION:

To be distributed in accordance with DA Form 12-31 (qty rqr block no. 94) requirements for Organizational Maintenance Instructions for all Fixed and Rotor Wing aircraft.

TM 55-1740-201-23P TRANSPORTER, AIRMOBILE-1971